

ARMASPEC™

TACTICAL ADVANTAGE®



PROUDLY CELEBRATING
13 YEARS

2026

MADE IN U.S.A

Contents

About Us:	Pg. 2
New For 2026:	Pg. 3
Elev8™ Risers:	Pg. 5
SRS™ -Stealth Recoil Systems:	Pg. 7
SMB™ - Sound Mitigation Buffers:	Pg. 9
Arca Rails:	Pg. 11
Charging Handles:	Pg. 19
Lower Parts and Accessories:	Pg. 21
Upper Parts:	Pg. 25
Pistol Parts:	Pg. 27
Stock And Accessories:	Pg.31

ALL PRICING IS MSRP.



ABOUT US



Founded in 2013 and proudly located in New Mexico, USA, ARMASPEC is a U.S. manufacturer of premium firearm accessories for AR, Glock, AK, and other leading platforms. We design and produce innovative, performance driven components, including Stealth Recoil Systems, charging handles, parts kits, selectors, stocks, and now precision scope mounts, all engineered to deliver a tactical advantage and priced for every American. Every ARMASPEC product is built with a commitment to American manufacturing, durability, and real-world performance.

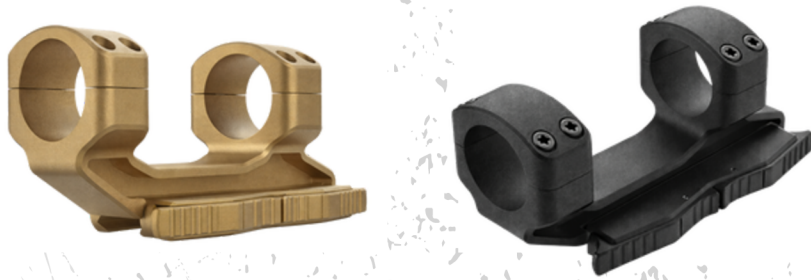


Our Principles
Innovation • Quality • Value

www.armspec.com

MADE IN U.S.A

NEW SCOPE ACCESSORIES FOR 2026



QD - 30 mm SCOPE MOUNT

Armaspec's new scope mount features a patent-pending QD detach system for rock-solid stability, repeatable accuracy, and consistent zero, now available in 30 mm with additional sizes coming mid-2026, and is machined from aircraft-grade aluminum to withstand any recoil.

\$199.99



QD CANTILEVER MOUNT

Armaspec's new cantilever scope mount with patent-pending QD technology delivers lightweight strength, forward optic positioning, and rock-solid, repeatable stability for consistent accuracy and optimal eye alignment.

\$159.99

NEW BUFFER SYSTEMS



SMB™ – MINI

The Gen3 Sound Mitigation Buffer™ Mini is a patented, single stage, drop in design buffer system for pistol buffer tubes, delivering smoother, quieter operation by eliminating spring to tube contact.

\$69.99



LAW FOLDER ADAPTER

The Armaspec New Law Folding Adapter delivers the quiet operation, recoil reduction, and durability of the SRS and SMB while enabling seamless compatibility with folding stock systems like the LAW Tactical GEN 3-M.

\$59.99



SMB™ – SFAR

The new Ruger SFAR SRS™ GEN4 provides smooth, quiet operation and significantly reduced felt recoil with a self contained, multi stage drop in recoil system. Specifically designed for the the Short Frame AR system.

\$99.99



ELEV8
SERIES

- 2.26" TO OPTICAL CENTERLINE
- DIRECT MOUNT TO PICATINNY
- MATERIAL: 7075 T6 ALUMINUM/4140 STEEL
- FINISH: TYPE III HARD COAT ANODIZED

Optic Risers

i-BEAM (9/13 SLOT)



The ARMASPEC ELEV8 i-BEAM Series Optic Riser securely raises lower 1/3 co-witness optics to a precise 2.26" height, improving ergonomics, night vision and compatibility, and speeding the time on target.

PLANK(9 slot)



The ARMASPEC ELEV8 PLANK Riser securely raises lower 1/3 co-witness optics to a precise 2.26" height while positioning them forward for improved eye relief, enhancing ergonomics, night vision and speeding the time on target.

\$89.99/\$99.99

X-RISER & LOW DIVE



The ARMASPEC ELEV8 High Rise Optic Riser securely elevates T1/2 footprint red elevates T1/2 footprint red dots for faster sight acquisition and night vision use, while maintaining a sleek, snag-free, lightweight design with iron sight compatibility.

\$139.99



\$59.99

The Armaspec Low Dive for the X-Riser Mount is a low-profile, forward-offset mounting solution that provides optimal positioning and rock-solid stability for red dots, laser rangefinders, and other Picatinny rail-mounted accessories while seamlessly integrating with the Armaspec X-Riser platform.

SRS™ - Stealth Recoil System



- AR-9, AR-15 AND AR-10 AND SFAR
- DROP-IN REPLACEMENT FOR CARBINE BUFFER AND SPRING
- C: 3.3 OZ, H: 3.8 OZ, H2: 4.7 OZ, H3: 5.6 OZ, 9MM: 6.4 OZ
- REDUCE FELT RECOIL
- REDUCE SOUND BY KEEPING THE BUFFER SPRING FROM RUBBING AGAINST THE INNER WALL OF THE BUFFER TUBE
- PATENTED

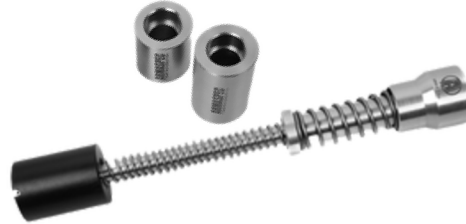
SRS™ – Stealth Recoil Systems



SRS™

The Stealth Recoil Spring™ SRS™ GEN4 is a self contained, multi stage drop in buffer system that delivers smooth, quiet operation while significantly reducing felt recoil.

\$84.99



SRS™ – AR15 KIT

The Stealth Recoil Spring™ SRS™ GEN4 is a self contained, multi stage drop in buffer system that delivers smooth, quiet operation, reduced felt recoil, and comes as an assembled AR15 C kit with included H and H2 weights for custom tuning.

\$109.99



SRS™ – BUFFER TUBE KIT

The Armaspec SRS™ Enhanced Buffer Tube Kit includes everything needed to mount a stock to a lower receiver, featuring a mil-spec 7075-T6 6-position buffer tube, steel castle nut and end plate, and the SRS™ GEN4 multi stage recoil buffer system.

\$120.99

SMB™

Sound Mitigation Buffer

- SINGLE-STAGE DROP-IN BUFFER SYSTEM
- SMOOTH, QUIET OPERATION
- ADJUSTABLE SPRING WEIGHT (0.25 LB REDUCTION PER COIL, UP TO 12 COILS)
- PATENTED

SMB™ – Sound Mitigation Buffers



The Gen3 Sound Mitigation Buffer™ (SMB™) is a single-stage drop-in replacement for your standard buffer and spring that provides smooth, quiet operation by preventing the spring from rubbing against the inner wall of the buffer tube.

\$59.99



SMB™ – MINI

Newly designed specifically for pistol buffer tubes, the Gen3 offers optimized fit and performance in compact platforms.

\$69.99

SMB™ Buffer Kit



Now available as a complete kit, the Gen3 Sound Mitigation Buffer™ (SMB™) includes a buffer tube, castle nut, and endplate for a true drop-in solution.

\$129.99

ARCA RAILS

The image displays several ARCA RAILS components, including a long rail with a Picatinny-style top surface and several shorter, modular rail sections. Each component is black and features the 'ARMASPEC' logo. The components are arranged on a grey surface, with a circular logo partially visible on the right side.

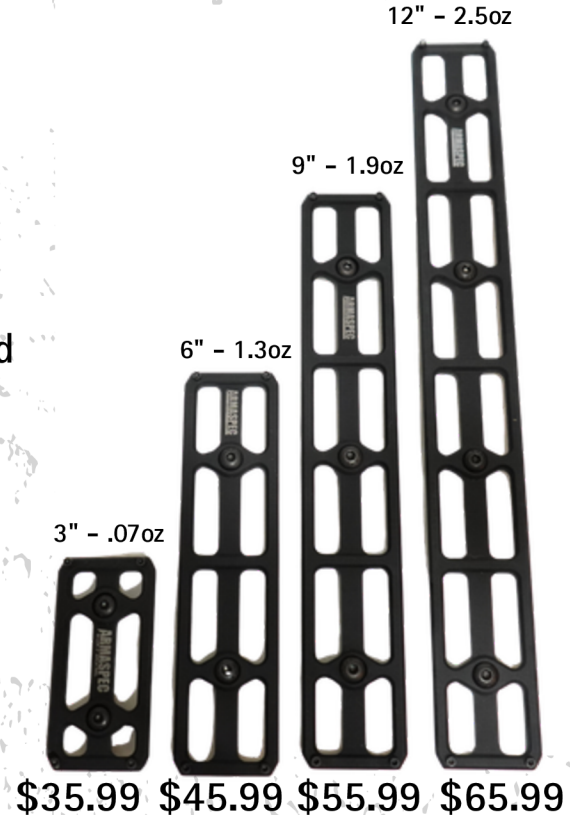
- 3", 6", 9" 12" LENGTH
- M-LOK®
- MATERIAL: 6065 ALUMINUM
- FINISH: TYPE III HARD COAT ANODIZED

ARCA RAILS

The Armaspec Arca Rail seamlessly integrates with M-LOK® handguards to provide a stable, versatile Arca style mounting platform for bipods and other shooting accessories. Built for strength and quick adjustability, it enhances control and accuracy for shooters who demand premium quality and performance.

- Super Light weight
- Material: 6061-T6 Aluminum
- Finish: Mil-Spec Type III Hard Coat Anodized

- 3" - 0.7oz
- 6" - 1.3oz
- 9" - 1.9 oz
- 12" - 2.5 oz



MUZZLE DEVICES

A top-down view of a chessboard with several chess pieces scattered across it. In the center of the board is a large, white, stylized outline of a muzzle device, which is the product being advertised. The background is a dark, textured surface.

- COMPACT & LIGHTWEIGHT DESIGN
- CONCEALED CARRY FRIENDLY
- DURABLE CONSTRUCTION
- EASY INSTALLATION & PERFORMANCE

HARMONICS TUNER

Dial It In. Shoot Sub-MOA. Every. Single. Time.



Dual Functionality: Combines a muzzle brake and a barrel tuner in one unit.

Recoil Control: Significantly reduces recoil for better follow-up shots.

Harmonics Tuning: Fine-tunes barrel harmonics for improved accuracy.

Tool Adjustment: Simple tuning via brass hex screw, no special tools needed.

Easy Customization: Lets users adjust for ammo, barrel, and environmental factors.

\$129.99

SUPPRESSOR READY

CATACOMB



TRIAD



RIFTER 2.0 / MINI

The Armaspec Muzzle Brake suppressor-ready line up future-compatible upgrade designed for flat shooting and fast target acquisition through its advanced variable port and chamber design. Engineered to direct blast forward, it reduces pressure and concussion, making it ideal for close-quarters, team environments, and prone shooting, especially when paired with the Reactor Mini™ Blast Shield. Fully compatible with Plan B and Rearden Atlas-style mounts and the Armaspec modular ecosystem, the muzzle devices deliver unmatched versatility and control for the modern shooter.

\$89.99

Muzzle Device Accessories



H.U.B.

The Armaspec HUB adapter brings unmatched versatility and durability to your suppressor setup. Featuring a Bravo-style 1.375 x 24 external thread and 0.9 x 24 internal threads, it delivers increased durability without added weight. Precision-machined from 17-4 stainless steel, the HUB adapter is built to withstand hard use while maintaining a lightweight, robust profile.

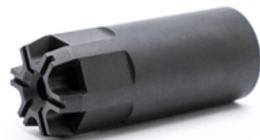
\$69.99



Reactor™

The Armaspec REACTOR is a high-performance, non-NFA blast-forward device that directs concussion and muzzle blast straight ahead to protect the shooter and those nearby, precision-machined from stainless steel with a black nitride coating to reduce dust signature and ensure full compatibility with H.U.B. mounts.

\$139.99



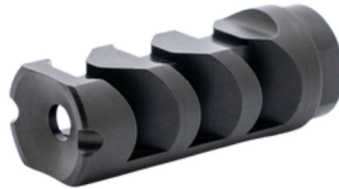
Mini-Reactor™

The Armaspec MINI-REACTOR is a high performance, non-NFA blast forward device that directs concussion and muzzle blast straight ahead to protect the shooter and those nearby. Precision-machined from stainless steel with a black nitride coating, it reduces dust signature and is fully compatible with Rearden and Plan B mounts and suppressor systems.

\$129.99

FIREBALL™

Compensating Muzzle Brake



Unleash the Beast. Dominate the Range.

The Armaspec Fireball 3 Port Muzzle Brake isn't just an accessory—it's an upgrade with attitude. Engineered for the AR-15 and AR-10 platforms, this beast brings together cutting-edge performance and bold design in one patented powerhouse. The triple-port configuration, crushes recoil and slams the brakes on muzzle rise, giving you lightning-fast follow-up shots and laser-precise target reacquisition.

\$89.99

RIFTER™ 2.0



Suppressor Ready. Future Compatible.

MADE IN U.S.A

Victory™

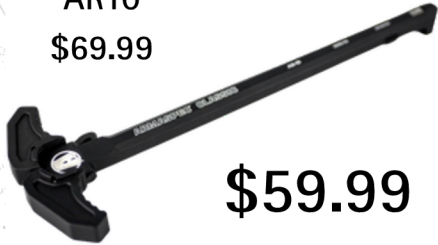
CHARGING HANDLE



- TRUE AMBIDEXTROUS DESIGN
- INTEGRATED GAS VENTS
- CENTER FORCE CHARGING
- MATERIAL: 7075 T6 ALUMINUM/4140 STEEL
- FINISH: TYPE III HARD COAT ANODIZED

CHARGING HANDLES

AR10
\$69.99



\$59.99

CLASSIC

\$79.99



AR10
\$89.99

VICTORY™

AR10
\$89.99



\$79.99

VICTORY™ COMPACT

The Armaspec Victory™ ambidextrous charging handle for 5.56/.223 features ergonomic curved handles, enlarged latches, integrated gas vents to direct gas away from the shooter's face, and center force charging to reduce shaft twisting, all proudly made in the USA. The Armaspec Classic charging handle delivers many of the same proven features—including ambidextrous curved handles and center force charging—while removing gas ports and hollow levers to offer a more budget-friendly option. Both models are precision-machined from 7075 aluminum with a Mil-Spec Type III hard coat anodized finish and are backed by Armaspec's lifetime warranty.

Available in Black, Red, FDE, ODG, Bronze and Blue.

Lower Parts and Accessories

A close-up photograph of a hand holding a magazine of ARMSPE rifle ammunition. The magazine is positioned next to the lower receiver of an AR-style rifle. The background is dark and out of focus, emphasizing the rifle and the ammunition. The text 'Lower Parts and Accessories' is overlaid in a large, white, outlined font at the top of the image.

- PRECISION-ENGINEERED PARTS BUILT FOR RELIABILITY AND PERFORMANCE
- HIGH-QUALITY MATERIALS ENSURING DURABILITY UNDER DEMANDING USE
- DROP-IN COMPATIBILITY WITH MOST AR-PLATFORM LOWERS
- DESIGNED TO ENHANCE CONTROL, FUNCTION, AND CUSTOMIZATION

Safety Selectors



ST 45/90



FULCRUM

Armaspec offers advanced ambidextrous safety selectors, including the FULCRUM-45/90™, which allows shooters to choose between 45- or 90-degree operation, and the ST45, a dedicated 45-degree selector for faster engagement on AR10 and AR15 platforms. Both feature easy-to-reach levers, ultra-smooth action, and a crisp, positive lockup for confident, intuitive control from either side of the receiver. The ST45 is designed for lowers with proper 45-degree "FIRE" markings, while the FULCRUM-45/90™ offers flexible compatibility. Patent Pending.

\$44.99 Available in Black, Red, FDE, ODG, Bronze and Blue.



Super Light

Available in a superlight package featuring aluminum parts. The lower parts kit for .223/5.56 delivers a high-end, all-in-one solution without trigger group or grip, finished in a variety of colors.

\$84.99

Available in Black, Red, FDE, ODG, Bronze and Blue.

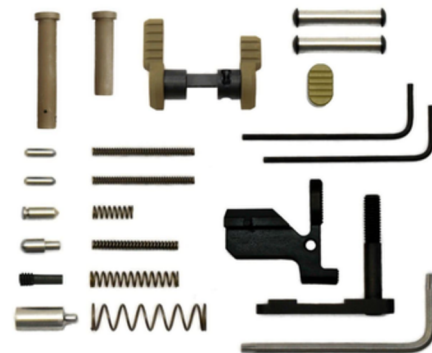
LPK's



GUN BUILDERS KIT

The Armaspec stainless steel gun builder's lower parts kit for .223/5.56 delivers a high-end, all-in-one solution without trigger group or grip, finished in black with steel takedown and pivot pins.

\$69.99



AR-10 LPK

The Armaspec stainless steel gun builder's lower parts kit for .308/7.62 is designed for the AR10 platform, delivering a high-end, all-in-one solution without trigger group or grip, finished in black with steel takedown and pivot pins.

\$95.99

Small Component's

Lower Parts SPARE PARTS KITS



Anti Walk Pin

Armaspec stainless steel .154 anti-walk pins prevent AR hammer and trigger pins from walking out, fit AR 5.56/.223 and 7.62/.308 platforms, and include screws, hex keys, a lifetime warranty.

\$11.99



When small AR parts go missing, the Armaspec AR Spare Parts Kit has you covered with essential stainless steel springs and detents for AR 5.56/.223 and 7.62/.308 platforms, made in the USA with a lifetime warranty.

\$15.99



Take Down Pins

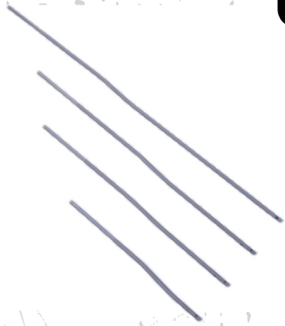
The Armaspec Superlight aluminum takedown and pivot pin set for AR15/M16/M4 features mil-spec .250" dimensions with enhanced convex and concave ends, EZ-Set™ detent installation, included detents and springs, and a lightweight dimpled design for easy use and installation.

\$15.99

Upper Parts



Upper Receiver Parts



Gas Tubes

- Stainless Steel Gas Tube for AR15 & AR10 rifles
- Available Length: Pistol 6.6875in, Carbine 9.8in, Mid 11.75in, Rifle 15.125

\$13.99



GAS BLOCKS

- Material: Steel
- Finish: Black Nitride
- Weight: 1.5 oz.

\$27.99



Bolt Carrier Groups

The Armaspec Mil-Spec Bolt Carrier Group features a black nitride-finished 8620 steel carrier and a precision-ground 9310 steel bolt for smooth, reliable performance. MPI and HPT tested, it's made in the USA and compatible with AR15/M4 rifles in .223/5.56 and .300 Blackout.

\$129.99

Pistol Comps



- COMPACT & LIGHTWEIGHT DESIGN
- CONCEALED CARRY FRIENDLY
- DURABLE CONSTRUCTION
- EASY INSTALLATION & PERFORMANCE

Pistol Muzzle Devices



ROOK

- Reduces recoil and muzzle rise
- Compact, lightweight design
- Minimal printing for concealed carry
- Easy installation with wrench flats

\$50.99



FMC™

- Reduces recoil and muzzle rise
- Compact, lightweight design
- Minimal printing for concealed carry
- Easy installation with wrench flats
- Designed to enhance recoil control on Glock 17 pistols
- Reduces muzzle rise for faster target re-engagement
- Frame mounted design maintains consistent performance
- Easy installation with no threaded barrel required
- Patented, precision engineered Armaspec construction

\$139.99



PAWN

- Compact micro compensator designed specifically for pistols
- Reduces muzzle rise and felt recoil for improved control
- Precision-engineered for durability and reliable performance
- Low-profile design enhances handling without adding bulk

\$50.99

Pistol Upgrades



GLOCK PINS

Armaspec stainless pin kits for Glock® pistols include a 4-pin set for Gen 4 and a 3-pin set for Gen 1-3, fitting most standard Glock® models (excluding 36/42), and are made in the USA.

\$14.99



GUIDE RODS

The ARMASPEC fluted 303SS guide rod for Glock® Gen 1-3 features a lightweight QPQ-finished design, works with OEM or aftermarket springs, and fits compact and standard Gen 3 models with multiple color cap options.

\$33.99



SAFETY PLUNGER

This high-performance stainless steel safety plunger features a rounded, low-friction design to reduce trigger drag and smooth trigger pull, fitting Glock® Gen 2-4 models including 17, 19, 20, 22, 23, 26, 27, 29, 31-35, and 40.

\$19.99

PAWN PISTOL COMP



Enhances shooting performance while maintaining a sleek, low profile design.

Stocks And Accessories



- AMBIDEXTROUS 6-POSITION STOCK ADJUSTMENT
- ATTACHES DIRECTLY TO MIL-SPEC BUFFER TUBE: NO SPECIAL BUFFER OR BUFFER TUBE NEEDED
- QD SLING ATTACHMENT POINT

XPDW™ 2.0



The Armaspec XPDW™ Gen2 Stock delivers rugged performance and sleek design with a 6-position aluminum body reinforced by hardened steel rods for uncompromising strength. Its low-profile aluminum latch carrier, steel lock engagement point, and fast ratcheting deployment system allow lightning-quick adjustments and rock-solid lockup on a standard mil-spec buffer tube—no modifications required. Featuring an integrated QD sling attachment, proudly made in the USA, and backed by a lifetime warranty, the XPDW™ Gen2 is built to perform and built to last.

\$219.99

MADE IN U.S.A

STOCK Accessories



CASTLE NUT



Castle Nut and Endplate



ENDPLATE

The Armaspec Self-Retention Castle Nut & QD Endplate Bundle delivers unmatched stability, simplicity, and style with patented self-retention thread technology that eliminates staking or thread locker, paired with a quick-detent, set-screw design for effortless installation. Precision-machined from ultra-lightweight yet rugged 7075 aluminum, it offers exceptional strength, reduced weight, and a built-in QD sling socket for smooth, reliable sling transitions in tactical or everyday use. Available as a complete bundle or as a standalone castle nut or QD endplate, and offered in multiple color options, it's the perfect upgrade for shooters seeking secure retention, durability, and a clean custom look.

\$14.99

\$33.99

\$19.99

MADE IN U.S.A

STOCK Accessories



BUFFER RETAINER PIN SET

This ARMASPEC made stainless steel buffer retainer and spring set offers corrosion-resistant durability and reliable function for both AR-15 and AR-10 platforms.

\$7.99



BRAIDED BUFFER SPRING

The Armaspec Braided Buffer Spring™ (BBS™) delivers a smoother, quieter, and longer-lasting cycling system with a precision 3-strand, 51-coil design that evenly absorbs energy for improved reliability in standard carbine-length buffer tubes, and it fits over standard buffer weights, pairs with most buffers on the market, and includes a drop-over spacer to prevent over-travel on tapered buffer bodies.

\$24.99



BUFFER TUBE KIT

This mil-spec carbine buffer tube (receiver extension) kit features a 6-position, black hard-coat anodized 6061 aluminum tube and includes a buffer tube, castle nut, and end plate, while accepting standard AR-15 buffers, springs, and all Armaspec recoil systems.

\$38.99

ARMASPEC™

TACTICAL ADVANTAGE™

MADE IN U.S.A
